

NORTHWIND ARTS CENTER & NORTHWIND ARTS ALLIANCE

2409 Jefferson St., Port Townsend, WA 98368
Hours: Noon – 5:00 pm Thursday – Monday Phone: (360) 379-1086

SEPTEMBER 2008 NEWSLETTER

More information on these activities can be found at our website at www.northwindarts.org

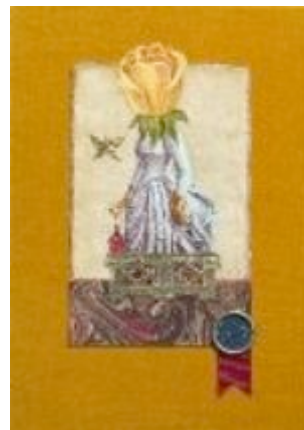
GALLERY HAPPENINGS

"THE ARTIST-ILLUSTRATOR", an invitational show opening at Northwind Arts Center at noon on **Friday, August 29**, will examine and showcase the works of six local artists who are also illustrators. Featured are **Barbara Berger, Michael Felber, Max Grover, Pierr Morgan, Jesse Joshua Watson and Richard Jesse Watson**. Many well-known illustrators often have a second body of work of more personal, idiosyncratic art not related to their books. The relationship between working as artist and working as illustrator is varied; sometimes each feeds off each other and sometimes they express very different skills and interests.



Jesse Watson

Barbara Helen Berger is a Bainbridge Island artist who began as a painter and later branched into creating books for children. Her ten published books are filled with detailed, lyrical images. **Michael Felber's** detailed drawings and etchings and paintings reflect his interest in the natural world, from grizzlies and otters to insects. **Max Grover** is a Port Townsend artist well-known for his whimsical and humorous paintings featuring everything from cats and dogs to tugboats and bathtubs. **Pierr Morgan** is a Whidbey Island artist who has illustrated eighteen picture books including award-winners *The Squiggle*, *Cool Time Song*, and *Dragon Dancing*. **Richard Watson's** richly colored illustrations in such works as *THE MAGIC RABBIT* have been said to fuse realism with fantasy. **Jesse Watson** has followed his father Richard into the book field, both writing and illustrating. His paintings are filled with strong and dynamic imagery. The show will run through September 28, 2008.



Barbara Berger

Please come to meet the Artists during Gallery Walk on Saturday, September 6 from 5: 30 to 8 PM at the Northwind Arts Center located at 2409 Jefferson Street.

There will be a Coffee Talk on Friday Sept. 19, at 7 PM at Northwind Arts Center. Please join us for coffee and a discussion with the artists

ART PORT TOWNSEND

A Festival of the Arts

MARK YOUR CALENDARS & SAVE THE DATES for the 10th Annual ART PORT TOWNSEND 2008. From October 3-26. The schedule includes two art shows, the Studio Tour, poetry readings and more.... Click below for the Art Port Townsend Website at <http://artporttownsend.org>

2008 EXPRESSIONS NORTHWEST/ART PORT TOWNSEND JURIED SHOW. The entry deadline has passed and the artworks are now being judged. From **October 3 to 26**, the Northwind Arts Alliance and the Port Townsend Arts Commission will present the Tenth Annual Art Port Townsend festival celebrating the visual arts. Barbara Shaiman, the Artistic and Managing Director of the Seattle Art Museum's SAM Gallery Art Sales and Rental for the past 18 years, is the juror for this year's art show. She is considering hundreds of entries submitted by 206 artists from Alaska, Oregon, Idaho, Montana, Washington and British Columbia - notifications of who and what works of art will be in the show will be mailed on September 12th. The juried show, "Expressions Northwest", will be on display at the Northwind Arts Center, 2409 Jefferson St., Port Townsend from **October 3 to 26**. Northwind is open noon to 5:00 PM and is closed Tuesday and Wednesday.



At 1 PM on **Saturday, October 4**, at Northwind Arts Center, the show's Juror, Barbara Shaiman, will speak on: "Current Northwest Perspectives". Besides her work with SAM, she is also the curator for the Alexis Hotel. Barbara devotes her time to jurying community art exhibits, participating in public art panels, advising local arts organizations and independent art consultation. The lecture is free.

Michael Hale

THE ART STUDIO TOUR PREVIEW ART SHOW will open on Saturday, October 4th, during Gallery Walk. Refreshments will be served, and artists will be present to meet and greet. The show will be held at 940 Washington Street, (uphill from the corner of Taylor and Washington Streets, at the end of the sidewalk). The show will open Saturday, October 4th at 5 PM and be open through the week from 11 AM to 5 PM until Sunday, October 12 closing at 4 PM. There will be a sample of each Art Studio Tour Artist's work, plus their biography, to enable the public to preview the tour.

THE STUDIO TOUR will be held on **Saturday and Sunday, October 11 and 12**, from 10 to 4 PM. Art Port Townsend has an extensive Artists' Studio Tour planned. There is no charge for the tour which will provide an opportunity to visit local artists in their studios, observe demonstrations, and discuss the creative process. This year, 41 studios in the Port Townsend vicinity are participating. Artists working in oil, watercolor, acrylic, pastels, printmaking, sculpture, ceramics, woodworking, fabric, glass and a variety of mixed media will be included in the tour. Maps and information are available at Northwind Arts Center or www.artporttownsend.org.

POETS REACTION TO THE JURIED SHOW – Poetry Reading to be held on Thursday, October 23 at 7 PM at the Northwind Arts Center. Again, this year's festival also celebrates the written word and how it relates to art. Surrounded by the juried Art Port Townsend exhibit, "Expressions Northwest", writers will be invited to respond to individual works in the show or to the show as a whole. Northwind writers will read their written responses to the juried show. Listeners are welcome and there is no charge for the event.

POETRY NEWS

On Thursday, September 11, Northwind Reading Series will feature **Peter Pereira and Rebecca Loudon**. The readings will start at 7 pm in the Northwind Arts Center, 2409 Jefferson Street.

Peter Pereira's poems have appeared in *Poetry*, *Prairie Schooner*, *New England Review*, *Virginia Quarterly Review*, *Journal of the American Medical Association*, and have been anthologized in *180 More: Extraordinary Poems for Everyday*, and the 2007 *Best American Poetry*. His poems have also been featured online at *Verse Daily*, *Poetry Daily*, as well as on National Public Radio's *The Writer's Almanac*. His books include *The Lost Twin* (Grey Spider 2000), *Saying the World* (Copper Canyon, 2003, Winner of the Hayden Carruth Award), and *What's Written on the Body* (Copper Canyon 2007). He is a family physician in Seattle, and was a founding editor of Floating Bridge Press.

Rebecca Loudon is the author of two collections of poetry, *Tarantella* and *Radish King*, from Ravenna Press, and a chapbook, *Navigate*, *Amelia Earhart's Letters Home*, from No Tell Books. *Cadaver Dogs*, her third collection of poetry, is forthcoming from No Tell Books this October. Rebecca is the founder and teacher of two poetry workshops; *The Wallingford Irregulars*, now in its 10th year, and *The Foundry*, now in its 2nd year. She is a professional violinist, and teaches violin to children.

The readings are free and open to the public. Donations are gladly accepted to support Northwind, a nonprofit organization dedicated to connecting the arts to our community.

Bill Mawhinney, Coordinator

Here is the Northwind Reading Series schedule September through December:

September 11: Peter Pereira & Rebecca Loudon

October 9: WINDFALL Readers: Bill Siverly & Michael McDowell

October 16: "Writing Instructions" featuring Sheila Bender, Brenda Miller, Suzanne Paola and Judith Kitchen reading essays about their experiences as writing teachers.

October 23: Poet's Reaction to Art Port Townsend's Juried Show Entries

November 13: Judith Kitchen & Jennifer Culkin

November 20: Michael Daly and Finn Wilcox

December 11: Readers' Party

2008 WORKSHOP SCHEDULE

"FRAMING AND PRESENTATION" with Jay Haskins and Don Tiller; August 28 from 10 to 3 PM at the Jefferson County Fairgrounds Building, Port Townsend. Cost for all participants: \$50. Don Tiller, with his wife Jolene, were former owners of Kismet Design and Custom Framing. Jay Haskins once worked as a framer for Frank Vane for a number of years. Presently he spends time pursuing his own art projects as well as curating and hanging many of the Northwind Art Alliance shows. In this capacity he has seen a lot of work presented many different ways. The presentation of artwork is a factor in whether a juror will choose a certain piece. How it is matted and framed, whether the framing seems to fit the piece or enhances a piece of work. In this 1-day workshop we will be looking at presentation and framing and how to enhance a work. We will discuss some do's and don'ts and provide contact info for supplies for mats, frames, glass and other supplies. Registration forms are available online and at the Northwind Art Center and can be left there with your tuition check. Link to [Framing Registration Form](#) For more information, please call Jay Haskins at (360) 385-6389 or jhkapotso@olympus.net

"ASSEMBLAGE" with A.K. Anderson: September 15-16 from 10 to 4 PM at the Jefferson County Fairgrounds Art Building, Port Townsend. Cost: \$130 (Volunteers \$100). You may begin preparing for Kim's workshop by gathering a few interesting wooden boxes or small drawers (12" max.) with a 2" to 5" depth. Shadow box frames may be used. As a participant, you will take home one or more pieces of assemblage art graced with your own collection of intrepid objects. Ms. Anderson is a graduate of Seattle's Burnley School of Art. She is a frequent participant in juried shows and has received many awards.



Kim will teach several different techniques of material layering, and methods of hidden and stylish material attachment. She will discuss the elements of design that help with material choices and their placement. The history of assemblage will be explored and its influence on recent popularity of the medium. Kim will also bring an offering from her personal collection of favorite objects to share.

Registration forms are available at the Northwind Art Center, 360-379-1086 or <http://www.northwindarts.org>. For more information, contact Jeanette Best at 360 437 9579 or jb主@cablespeed.com.

For more information, registration forms and supply lists for each workshop, go to our website at <http://www.northwindarts.org/news/workshops/>

Thanks from the Chairman of Education Committee. Thank you to Ginny King for all the registration forms and notebook maintenance and to Ginny Ford for the publicity so well written and published in a timely fashion. Thank you, Janet Lynch, for hovering over our activities and to the other members of the Education Committee: Pat Stromberg and Jeannette Best. Finally, I send thanks to those teachers and students that participated in this year's program. Happy painting to all! **Judy Courtwright**

VOLUNTEERS NEEDED

Northwind Arts Alliance needs a volunteer to be responsible for **writing news releases about Gallery events** at the Northwind Arts Center. If you are interested, please contact Jeanette Best at (360) 437-9579 or Rae Belkin at (360) 437-9442.

We also need volunteers to help with **finance** and **graphic design**. If you are interested, please contact Jeanette Best at (360) 437-9579 or jmailto:jb主@cablespeed.com.

CALL FOR ARTISTS

There is a **Call for Artists** from **Gallery Madera** in Tacoma, Washington. Their web site is <http://www.gallerymadera.com>, The show is called re-ART '08, running October 16-November 28. It's a juried exhibition about re-USING, re-NEWING, and re-THINKING our throw-away minded culture. The deadline for entries is Sept. 20th, and they will accept digital images of original artworks focused on primarily recycled material with an emphasis toward function and intent for permanence by e-mail at <mailto:gallerymadera@gmail.com> or mailed/dropped off at Gallery Madera, 2210 Court A, Tacoma, WA 98402. Multiple entries are accepted. Further details will be found at their web site. See link above.

Janet Lynch, Newsletter Editor