

## NORTHWIND ARTS CENTER & NORTHWIND ARTS ALLIANCE

2409 Jefferson St., Port Townsend, WA 98368

Hours: Noon – 5:00 P.M. Thursday – Monday Phone: (360) 379-1086

**"Connecting the arts and community."**

---

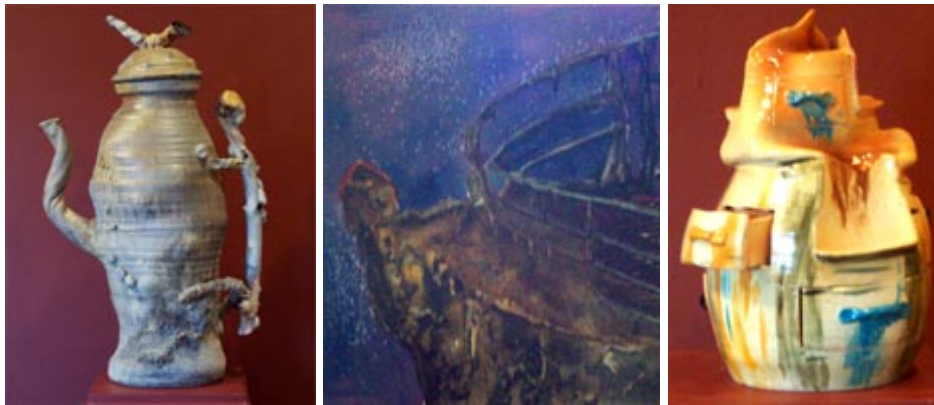
### March 2007 NEWSLETTER: "Arty Things to Do"

More information on these activities can be found at our website, [www.northwindarts.org](http://www.northwindarts.org)

---

**- Not Your Usual Arts Center -**

### Gallery Happenings



"Vessels" jurying results:

Best of Show – "Knotty Ewer" Ceramic by Ken Lundemo

Merit Award – "Titanic" Watercolor by Gary Griswold

Merit Award – "What's in your Drawers" Ceramic by Viva Jones

Merit Award – "Pots" Collagraph by Debra Brochin

Merit Award – "Grandma's Pitchers" – Oil painting by Janice Thomson (not shown)

### **"Vessels"**

What is a vessel? If you Google the word, you get 54,700,000 listings. According to *Random House Webster's College Dictionary*, a vessel could be a boat, a bowl, a tube or duct, a person regarded as a holder or receiver of a particular trait or even a pitcher. How does an artist interpret the word?

From March 2 through April 2, Northwind Arts Center will exhibit interpretations of the word "vessel" in a juried show of the same name- "Vessels".

The juror for the show is Eric Swangstu, founding Director of The Art Mine Gallery located in Port Hadlock, Washington. An accomplished artist and educator, Swangstu has shown his paintings and drawings in such diverse places as New York, Washington D.C., and Kansas City. As an educator and administrator, he has worked at some of the leading art schools and museums including the School of the Museum of Fine Arts in Boston, the Kansas City Art Institute, and most recently, the Pratt Institute in New York City.

### Coffee Talk

On March 16<sup>th</sup>, 7:00 P.M., Eric Swangstu, juror for the "Vessels" show will give the monthly Coffee Talk at the arts center. The talk begins at 7:00 P.M. at the Northwind Arts Center. There is a charge of \$2.00 for Jefferson Arts Alliance members and \$5.00 for non-members.

### 2007 Workshop Schedule

Many workshops have been scheduled for your continuing art education. You should check with our website, [www.northwindarts.org](http://www.northwindarts.org), from time to time to see what additional workshops are being offered and for any schedule changes. Complete information and registration forms are also available at the website.



**"ART ON THE FLOOR" with Mary Tyler; March 12, 10 – 4:00 P.M.** (Fairgrounds Art Building). Cost: \$65 (\$52 for Northwind volunteers) with a \$10 materials fee. Floor cloths are made of painted heavy canvas. Each participant will be provided with a 2 foot by 3 foot gessoed floor cloth that is ready to paint- old clothes and gloves are recommended. Acrylic and latex paints and brushes will be provided. You are encouraged to bring extra paint or brushes. Please contact Workshop Chair, Pat Stromberg, at [quiltpat@cablespeed.com](mailto:quiltpat@cablespeed.com) for more information.



**"TRAVEL JOURNAL" with Miriam Lansdon; April 2<sup>nd</sup>, 10:00 A.M. – 4:00 P.M.** (Fairgrounds Art Building). Cost: \$65. Now is your chance to create your own travel journal. Students will learn how to simplify a subject, use color and value and select significant lines to illustrate the subject. Watercolor washes and pen& ink will be used to illustrate buildings, landscapes, unique places and people. Please contact Sandy Rokoff-Lizut at [sand@cablespeed.com](mailto:sand@cablespeed.com) or 379-1511 for more information.



**"SCULPTURAL FORMS IN POLYMER CLAY" with Kate Snow, May 14-15, 10:00 A.M.- 4:00 P.M.** (Fairgrounds Art Building). Cost: \$130 (\$104 for Northwind volunteers) with a \$10 materials fee. In this class, you will explore ways to expand the clay's potential to create larger, lightweight structures using combinations of hollow forms, armatures,

and modular construction techniques. Some experience with conditioning and manipulating polymer clay is helpful. For more information, contact Lois James at [loisj@cablespeed.com](mailto:loisj@cablespeed.com) or 437-0422.

- **“REPURPOSING (Assemblage)” with Mark Fessler, June 18-19**, 10:00 A.M. – 4:00 P.M. (Fairgrounds). Please contact the Workshop Chair, Jeanette Best, at [jb主@cablespeed.com](mailto:jb主@cablespeed.com) for more information.



**“SUMI PAINTING/MIXED MEDIA” with Reni Moriarity , July 9-10**, 10:00 A.M. – 3:00 P.M. (Fairgrounds Art Building). Cost: \$130 (\$104 for Northwind volunteers) with a material fee for boards and paper. Reni will demonstrate several different background **techniques** which she has used in her paintings. You will learn how to mount the paper on the board, plus some sumi painting techniques. Bring a Hake brush, Japanese sumi brushes, scrap handmade paper for collage, watercolors, and/or Japanese or Chinese watercolors. Please contact Jeanette Best at [jb主@cablespeed.com](mailto:jb主@cablespeed.com) or 437-9579 for more information.



**“SURFACE DESIGN ON FABRICS” with MARY TYLER, July 25-26**, 10:00 A.M. – 4:00 P.M. (Mary’s studio in Chimacum). Cost: \$130 (\$104 for Northwind volunteers) with a \$15 materials fee. Participants will explore various kinds of dyes, application methods, color setting, low water immersion dyeing; color application by brushing, spraying and stamping thickened and thinned dye solutions. The workshop will also demonstrate various types of fabric sizing, and eater-soluble cold resists. Please contact Pat Stromberg at [quiltpat@cablespeed.com](mailto:quiltpat@cablespeed.com) for more information.



**“PAINTING THE LANDSCAPE EN PLEIN AIRE” (oil and acrylic) with William Turner, August 25-26**, 10:00 A.M. – 4:00 P.M. (Fairgrounds Art Building). Cost: \$130 (\$104 for Northwind volunteers). This workshop will take you into the great outdoors for three days of painting in the Port Townsend area. You will focus on spontaneous direct painting of the landscape while considering the importance of value, composition, color theory and atmosphere in creating successful, visually interesting landscape paintings. Please contact Jeanette Best at [jb主@cablespeed.com](mailto:jb主@cablespeed.com) or 437-9579 for more information.



**“CLAY PRINTING” with Deborah Mersky - September 24-25**, 10:00 A.M. – 4:00 P.M. (Fairgrounds Art Building). Cost: \$130 (\$104 for Northwind volunteers). Clay printing is a flexible and forgiving relief print technique that utilizes unfired ceramic clay and oil based inks. The fundamentals and some variations will be covered. You will print a series of related images and explore combining collage and water media with the finished prints. No prior experience is required. The workshop is appropriate for beginning and advanced artists. Please contact Marianna Sullivan at [Mys1011@aol.com](mailto:Mys1011@aol.com) for more information.



**"GUTSY APPROACH TO WATERCOLOR AND OTHER MEDIUMS"**  
**with David Turner, October 15-16, 10:00 A.M. – 4:00 P.M.**  
(Fairgrounds Art Building). Cost: \$130 (\$104 for Northwind volunteers). This workshop focuses on bold but controlled techniques that anyone can learn to do. This will be about "going for the gusto" and avoiding weak, boring paintings. Shy and timid painters will be welcomed and will leave with a new spirit. Please contact Karen Huguley at [karenhuguley@yahoo.com](mailto:karenhuguley@yahoo.com) for more information.

### **Poetry News**

Here is the Northwind Reading Series schedule for 2007 (subject to change) through June:

April 12: Susan Rich and Annette Spaulding-Convy

May 10: Tom Aslin and Madeline DeFrees

June 14: Sara Zale and her students

On March 8th, the Northwind Reading Series presents Pamela Moore Dionne and Jane Alynn.

- Pamela Moore Dionne was a 1999 Jack Straw Writer, and received one of Jack Straw's 2001 Artist Awards for her Sabina Spielrein Ghazal series. Her work appears in numerous publications including *Pontoon*, *Snow Monkey*, *The Drunken Boat*, and *Shenandoah*. She has enjoyed a residency at Centrum and an Artist Trust GAP Grant. She is the founding editor for the online journal LITERARY SALT and the creator of one of America's top award-winning word games, Baffle Gab™. She is affectionately known in many Port Townsend circles as the "Vizsla Lady".

- Jane Alynn's first collection of poems, *Threads & Dust*, was published by Finishing Line Press in 2005. Her poems have appeared in various journals, such as *StringTown*, *The Pacific Review*, *Quercus Review*, *Manorborn*, *Snowy Egret*, and *Switched-on Gutenberg*, as well as in several anthologies. In 2004 she was awarded a William Stafford Award from Washington Poets Association. She holds an MFA in Creative Writing from Antioch University Los Angeles and currently lives, writes, and directs poetry events in Anacortes.

The readings begin at 7:00 P.M. at Northwind Arts Center, 2409 Jefferson St., Port Townsend. Everyone is welcome.

### **Arts Opportunities**

**Women Painters of Washington** invites all women artists over the age of 18 residing in the State of Washington to enter its statewide competition, "Art Happens Everywhere", to be exhibited at the WA State Convention & Trade Center, Seattle, June 29-September 25. For INFO: Susanne Werner, Exhibition Chair, (425) 644-8295 or [swolvesart@worldnet.att.net](mailto:swolvesart@worldnet.att.net) or [www.womenpainters.com](http://www.womenpainters.com). Deadline: April 10, 2007.

**Something to think About:** "I hate flowers. I paint them because they're cheaper than models and they don't move!" – *Georgia O'Keefe (1887-1986)*

See you next month-

Rae Belkin, Newsletter Editor