

Northwind Arts Center & Northwind Arts Alliance

ARTS CONNECTIONS – April 2009

Gallery - April 3 to April 27



Becky Fletcher

An invitational show, **Skagit Expressions**, will open on **Friday April 3** featuring works of five artists from the Skagit Valley - **Becky Fletcher, Janet Foster, Teri Silva, Karen Fishburn and Patsy Thola Chamberlain**. Various mediums will be shown including fabric, beads, ceramic art, oil painting, and watercolor. The show will run through **April 27**. An opening reception will be held on **Saturday, April 4** from **5:30 to 8 PM** at the Northwind Arts Center, 2409 Jefferson Street, Port Townsend. A **Coffee Talk** with the artists will be held on **Sunday, April 19** at **2 PM** at the Northwind Arts Center.

Becky Fletcher graduated from the Art Institute of Boston. In oils, she celebrates the encounters with light and landscape that she has always photographed.

Janet Foster has been highly influenced by her travels in many parts of the world and many of these impressions and cultural influences appear in her art.

Teri Silva was educated at the Chicago Institute of Art focusing on ceramic sculpture. She taught in Chicago and now from her own studio in Sedro Wooley.

Patsy Thola Chamberlain creates ceramic art from clay. Each piece is hand built; a complicated process that includes air drying, kiln firing and cooling and glazing.

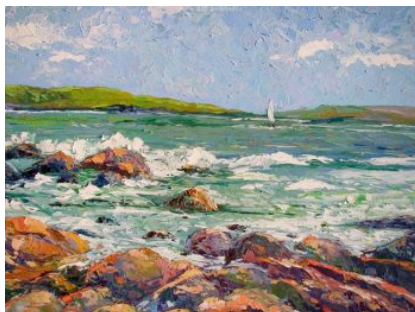
Karen Fishburn was privileged to study the art of glass painting with Lithuanian master Albinas Elskus. She also taught as a teaching assistant at Pilchuck Glass.

[Read more](#)

For a printable copy of this newsletter, go to:

<http://www.northwindarts.org/news/email-newsletter/>

Art Workshops - April 6 & 7 - Susan Hazard Oil and Palette Knife Painting



Susan Hazard

On **Monday and Tuesday, April 6 & 7**, from **10 AM to 3 PM** at the Jefferson County Fairground's Quimper Art Building in Port Townsend. Join Susan Hazard in this fun, rewarding and enjoyable workshop. Cost: \$130 (Northwind volunteers pay only \$100).

Susan has been painting almost exclusively with alla prima (all at once) oil and palette knife technique since 1992. The wet-into-wet technique is spontaneous and a very fast method of painting, suitable for all levels of painters. You will receive individual instruction at your level of skill. No previous experience is necessary.

Susan is currently a member and President of the Port Townsend Gallery and is organizing the Art Port Townsend Art Studio Tour for a third year in a row. For a printable registration form, click on the following link:

[Art Workshops.](#)

Go to Susan's web site at <http://www.susanhazard.com> For more information, contact Susan Hazard at 360-379-0859 or <mailto:susan.hazard@cablespeed.com> Or call Northwind Arts Center at (360) 379-1086.

[Read more](#)

The 2009 Workshop Schedule

More information about scheduled workshops appear often on the website page at [Art Workshops.](#)

Please check back often to find new additions to the schedule and updated information about the artists and their classes.

**Northwind Reading Series
April 9 – Germain & Loafman**



Carmen Germain

On **April 9**, Northwind Reading Series will feature **Carmen Germain** and **Patrick Loafman**. The readings will start at **7 pm** in the Northwind Arts Center, 2409 Jefferson Street.

Carmen Germain teaches writing and literature at Peninsula College in Port Angeles, where she is also a co-director of the Foothills Writers Series. *Living Room Earth* was published by Pathwise Press (2002), and *These Things I Will Take with Me* was published by Cherry Grove (2008). Her work has appeared in the anthologies *Proposing on the Brooklyn Bridge: Poems about Marriage* (Grayson Books) and *In a Fine Frenzy: Poets Respond to Shakespeare* (University of Iowa).

Patrick Loafman has published poems in over twenty journals (including Adirondack Review, Open Spaces, Pontoon and Bellowing Ark) and has two chapbooks of poetry published: *Song of the Winter Wren* and *Desert Journal*. He is trying to publish his first full-length book of poetry titled *Musical Seltzer* and a humorous novel called *Ockham's Razor*. He co-writes Act Locally, a biweekly article for the Port Angeles Daily with Diana Somerville.

The readings are free and open to the public. Donations are gladly accepted to support Northwind, a nonprofit organization dedicated to connecting the arts to our community.

[Read more](#)

Children's Festival of Art April 11



The ninth annual **Children's Festival of Art** will be held on **Saturday, April 11, 2009**, from **11 - 5 PM** at Fort Worden State Park, Building 204 in Port Townsend, Washington. Admission is \$7 per person.

The Festival is filled with hands-on, experiential learning opportunities in the arts and crafts, along with demonstrations by local artists. This year's activities include weaving, spinning, beading, clay on the wheel, clay handwork, wood sculpture, wooden knives, fairy houses, printmaking, watercolor painting, cob building, metal sculpture, sewing, art books, origami books, altered puppets, quilting, boat making, scratch art, hula hooping, blacksmithing, doll making, face painting, and a sound garden.

Everyone from young to old is invited to this Festival of learning and creativity, entertainment and imagination. The Festival is presented by Co-Arts and sponsored by Northwind Arts Alliance, and the Jefferson Arts Commission. Contact the Festival Coordinators, **Sidonie or Christopher** at **(360) 385-0655**, for information or volunteer opportunities.



Northwind Arts Center & Northwind Arts Alliance
2409 Jefferson Street, Port Townsend, Washington 98368
Hours 12 - 5 PM Thursday - Monday Telephone (360) 379-1086